

ZULU-01 COPILOT

CASE & DIAL

Stainless Steel Case with Sand Blasted Finish
Solid Wrist Pins with Real Screws
Screw Down Case Back
Sapphire Crystal AR Coating
Water Resistant to 20 ATM
Precision 120 Click Unidirectional Ratchet Style Bezel
LumiNova on Dial and Hands
Date Display
Alloy Movement Holder
Screw Down Crown

MOVEMENT

Seiko NH35A Hacking Movement with Date



DIMENSIONS

Watch Dimensions: 42 mm x 42 mm (1.65 in)
Bezel Diameter: 43 mm (1.7 in)
Distance Between Lugs: 22 mm (0.9 in)
Thickness: 15 mm (0.6 in)
Weight: 120 g

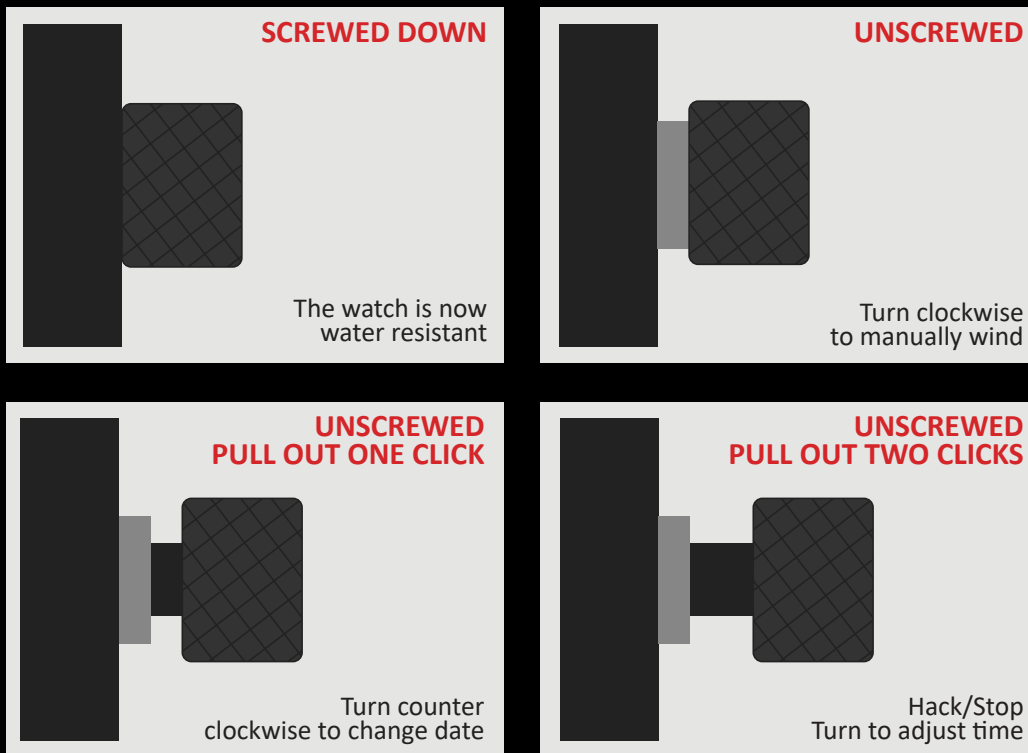
WARRANTY

Trintec Watches are warranted to be free from defects in material and workmanship under normal service for a period of **one year** from the date of purchase. This warranty does not apply to glass or water damage resulting from accidents, alterations or misuse. During the warranty period, return the product with proof of purchase to the dealer for replacement.

Trintec Industries Inc. 200 Fuller Rd., Unit 15 Ajax, ON L1S7G9

www.trintec.com

CROWN POSITIONS



THIS WATCH IS ONLY WATER RESISTANT WHEN THE CROWN IS SCREWED DOWN!

INSTRUCTIONS

WINDING THE MAINSPRING

This watch will automatically wind the mainspring while being worn.
If the watch has stopped, it should be hand wound to restart.
The reserve time from being fully wound is about 40 hours.

1. Unscrew the crown
2. Turn the crown clockwise 20-30 times
3. Push the crown in and screw down

SETTING THE TIME

1. Unscrew the crown
2. Pull the crown out two clicks (this "hacks" or stops the movement)
3. Turn the crown to adjust the hour and minute hands
4. Push the crown in and screw down

SETTING THE DATE

1. Unscrew the crown and pull the crown out one click
2. Turn the crown counter clockwise to set the date
3. Push the crown in and screw down

If set between 9 PM and 4 AM, the date may not change the following day.